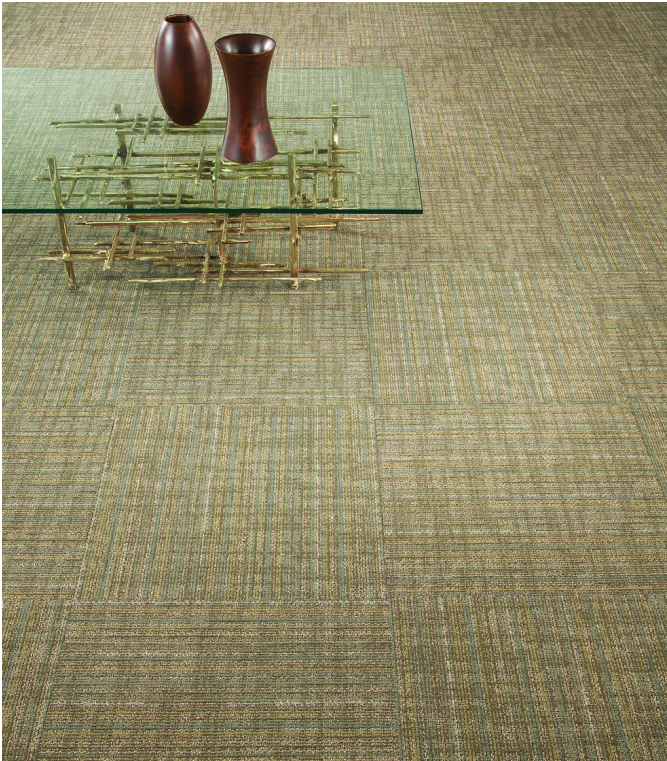


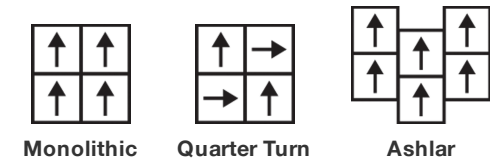
Radiance Tile

Product Type	Carpet Tile
Collection	Feeling Plush
Style Number	59361
Construction	Pattern Loop
Fiber	Ecosolution Q100™ Nylon
Dye Method	100% Solution Dyed
Primary Backing	Synthetic
Secondary Backing	Ecworx® Tile
Protective Treatments	SSP® Shaw Soil Protection
Recommended Adhesive	LokDots, 3000 Carpet Tile 1 Gallon, 4151 Multi-Use Carpet Tile 4 Gallon, 5000 Carpet Tile 1 Gallon, LokWorx Adhesive Tabs, 3800 Indoor Outdoor Carpet Tile 4 Gallon, 5000 Carpet Tile 4 Gallon or 3000 Carpet Tile 4 Gallon

	u.s.	metric
Product Size	24 in x 24 in	61 cm x 61 cm
Area per Carton	48 ft²	4.46 m²
Pieces per Carton	12 pcs	
Gauge	1/12 in	47.2 per 10 cm
Stitches	9.0 per in	36.5 per 10 cm
Average Density	9076 oz/yd³	0.336 g/cm³
Kilotex		13.45
Total Thickness	0.277 in	7.04 mm
Tufted Weight	30 oz/yd²	1017.2 g/m²



Recommended Installation Method



Performance + Testing

Radiant Panel	Class I
NBS Smoke	Less Than 450
Electrostatic Propensity	Less Than 3.5 kv
CRI Green Label Plus (GLP)	GLP9968
Pill Test	Pass*
ADA Compliance	>0.6, meets the recommended static coefficient of friction for ADA walking surfaces and accessible routes***

Test Reports may be included or listed by the manufacturing/inventory style number as opposed to the noted selling style number.

Warranties

Lifetime Commercial Limited Warranty

Diversity, Equity & Inclusion

We believe all humans are equal. Individually and collectively, we need to proactively create and promote opportunities that give everybody an equal footing in life. We nurture an environment where every voice and perspective can be heard, and proactively promote accessibility and inclusivity inside our network and beyond. One proof point is our ability to meet the criteria of the Social Fairness pillar of the Cradle to Cradle Product Standard. At Shaw Industries, we promote supplier participation that is reflective of Shaw's diverse customer base and local community. More than 42% of our spend***** is with small and diverse businesses. We believe having a strong Supplier Diversity Program is strategic for bringing more innovation to our businesses and openingnew markets for growth.

Material Health & Environmental Certifications

Certifications below apply exclusively to the carpet tile rug itself and not the LokWorx Tabs adhesive

Health & Wellbeing

Material Ingredient Transparency

Cradle to Cradle Certified® | Silver Level (Version 4.0)
Health Product Declaration (HPD) | 1,000 ppm Disclosure
Living Building Challenge (LBC) | Free of Red List Chemicals
Declare | LBC Compliant
NSF 140 | Gold
CRI Green Label Plus (GLP) | GLP9968

Indoor Air Quality

Climate Impact

Environmental Product Declaration (EPD)

3rd Party Certified in Accordance with ISO14044, ISO14025 & EN15804

Embodied Carbon (Cradle to Gate)

5.35 kg CO₂/m²

Life-Cycle Carbon Emissions

Carbon Neutral

Total Recycled Content

64% (Pre-Consumer 64% | Post-Consumer 0%)

Product Packaging

100% Recyclable

Global Product Assessment

Singapore Green Label | Certified
GSA | Approved
CE Marking (EN 14041) | 3rd Party Certified
Environmental Guarantee* | Re[turn] Reclamation Program* | Through Our Environmental Guarantee, Shaw Pledges to Transport And Recycle Any Ecoworx Carpet.
Country of Origin** | USA

WELL V2 Contribution Credit

X08 Hazardous Material Reduction

C2C Silver Level (Version 4.0)

Part 1: Limit Hazardous Materials Optimization

X10 Volatile Compound Reduction

C2C Silver Level (Version 4.0)

Part 1 (A): Manage Volatile Organic Compounds (VOCs) Optimization

X11 Long Term Emissions Control

Green Label Plus Certification: GLP9968

Part 2: Flooring Optimization

X13 Enhanced Material Precaution

C2C Silver Level (Version 4.0)

Part 1: Select Optimized Materials Optimization

X14 Material Transparency

C2C Silver Level (Version 4.0)

Part 1: Promote Ingredient Disclosure Optimization

Leed v4 Contribution Credits

MR Credit: Building Product Disclosure and Optimization
Environmental Product Declarations - Option 1: Environmental Product Declaration (EPD)

MR Credit: Building Product Disclosure and Optimization
Material Ingredients - Option 1: Material Ingredient Reporting

MR Credit: Building Product Disclosure and Optimization
Material Ingredients - Option 2: Material Ingredient Optimization

MR Credit: Building Product Disclosure and Optimization
Sourcing of Raw Materials - Option 2: Leadership Extraction Practices

EQ Credit: Low Emitting Materials
Option 1: Product Category Calculations

MR Credit: Interiors Life-Cycle Impact Reduction
Option 3: Design for Flexibility

3rd Party Certified in Accordance with ISO 14044, ISO 14025 & EN15804

C2C Silver Level (Version 4.0) or HPD (Version 2.1)

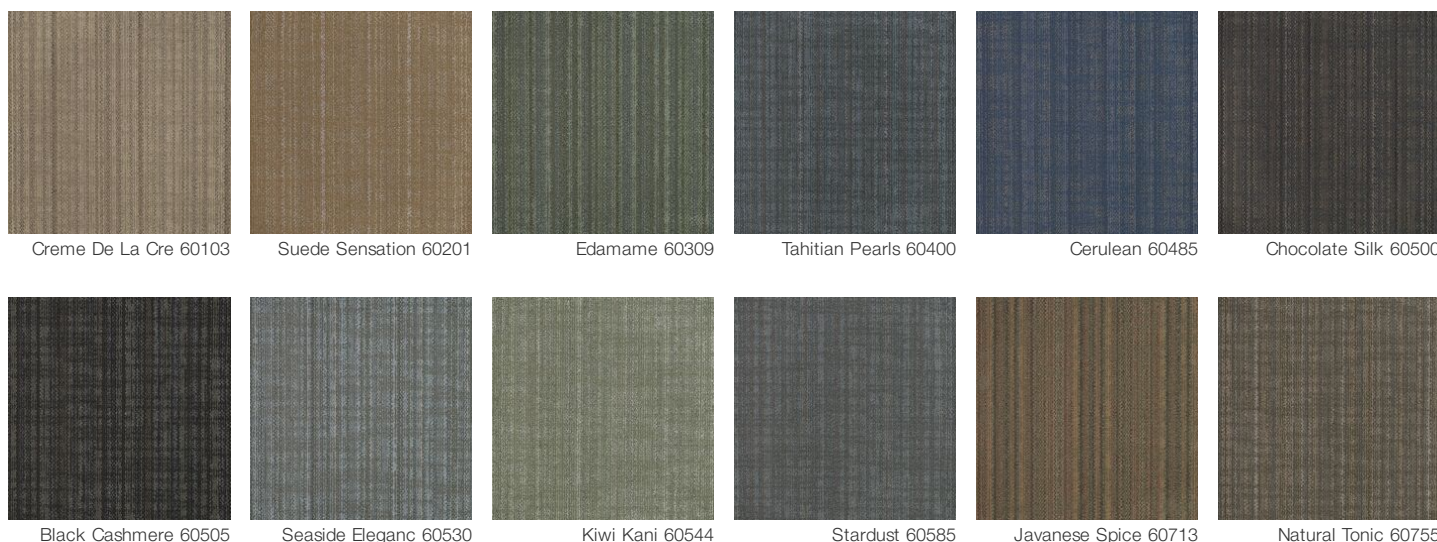
C2C Silver Level (Version 4.0)

Environmental Guarantee: Re[turn] Reclamation Program* | Through Our Environmental Guarantee, Shaw Pledges to Transport And Recycle Any Ecoworx Carpet.

Green Label Plus Certification: GLP9968

Ecworx Tile with Lokdots Installation System

Available Colorways



Additional Information

* To learn more about the recyclability of our products and our re[TURN], please visit shawcontract.com/sustainability.

**Meets or exceeds all local and national regulations in country of manufacture.

***This carpet is manufactured to be ADA compliant, but to be fully ADA compliant, the end-user must ensure the carpet is adhered to the floor and installed as outlined in the ADA standards.

[Installation Guidelines](#)

[Maintenance Guidelines](#)

Specifications are subject to nominal manufacturing variance. Material supply and/or manufacturing processes may necessitate changes without notice.

This product is an exclusive design and may not be duplicated in any manner. Use of this design in the creation of another product design is also strictly prohibited.

Visit shawcontract.com/testing for more information.



Corporate Headquarters +1 800 257 7429 | +1 706 532 7984 | Atlanta +1 404 853 7429 | Bengaluru +91 80 6773 0202 | Beijing +86 10 6568 588 | Chicago +1 312 467 1331 | Dubai +971 4 584 6956 | Hong Kong +852 2623 0371 | Latin America (Miami) +1 305 827 5912 | London +44 207 961 4120 | Los Angeles +1 800 233 1614 | Melbourne +61 3 9939 8543 | Mexico City +55 5010 7600 | Mumbai +91 22 6284 5050 | Nantong +86 400 800 7429 | New York +1 212 953 7429 | Paris +33 (0) 1 81 22 44 39 | San Francisco +1 415 955 1920 | Santiago +562 2431 5000 x 550 | São Paulo +55 11 3071 1702 | Shanghai +86 21 3338 4000 | Singapore +65 6733 1811 | Sydney +1 800 556 302

© 2024 Shaw Industries Group, Inc., a Berkshire Hathaway Company
April 29, 2024

3 of 3